

User Manual

Note: Before you begin installing EAProfitSantai-6.0, please note:-

1. You will need the Metatrader 4 client terminal software, if you do not have it, you can download and install it on your computer from here: www.fxopen.com
2. You are freely to install EAProfitSantai-6.0 on different Metatrader 4 Brokers in one computer.
3. It is highly recommend that you run this EA on a demo account for one week before you run it on a live account.

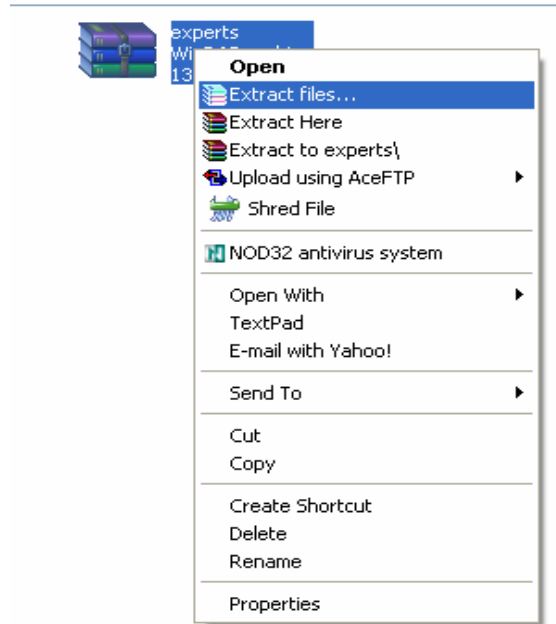
4.  = EA is turned off  = EA is turned on.

Make sure to turn on expert advisor after you finished install this EA.

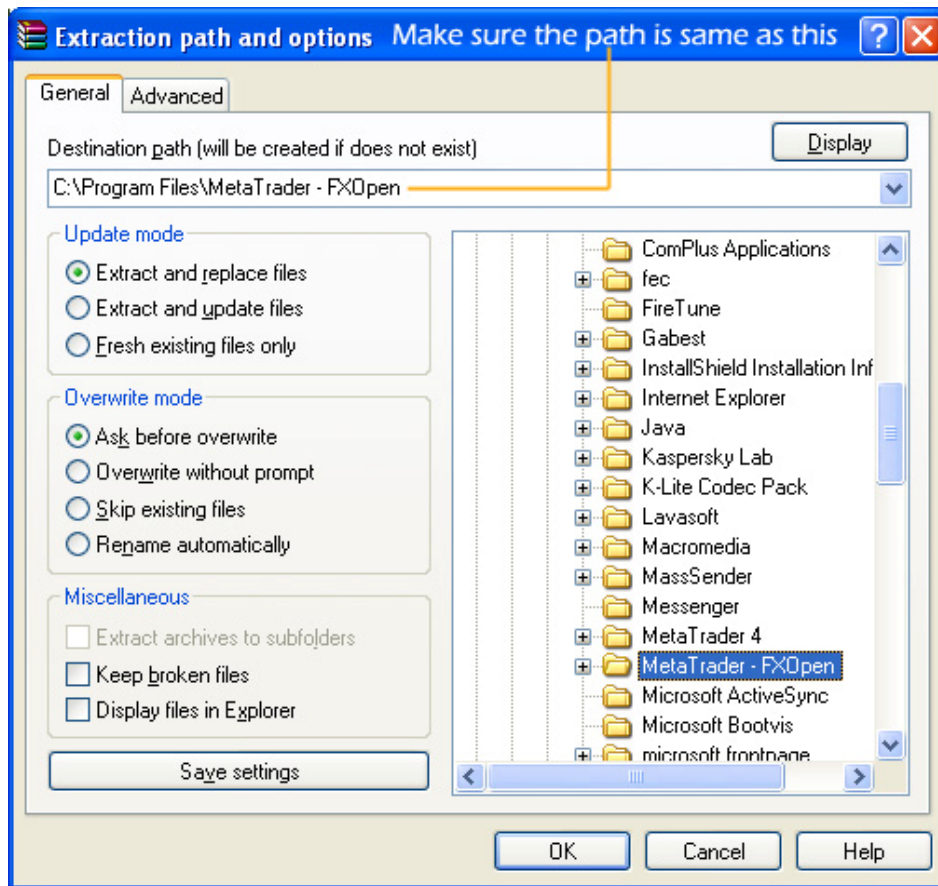
5. Avoid trading during big news releases such as NFP, etc.
6. Please do not infringements copyright term or you may not receive any update from Us.

Manual installation:

1. If you don't have the Metatrader 4 client terminal software, please download and install it on your computer. It can be downloaded from www.fxopen.com
2. Extract the experts.rar file you received in your email by right clicking the icon and selecting Extract files...



3. **NOTE:** Choose the same path as the image below.


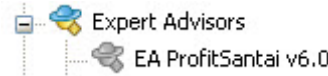


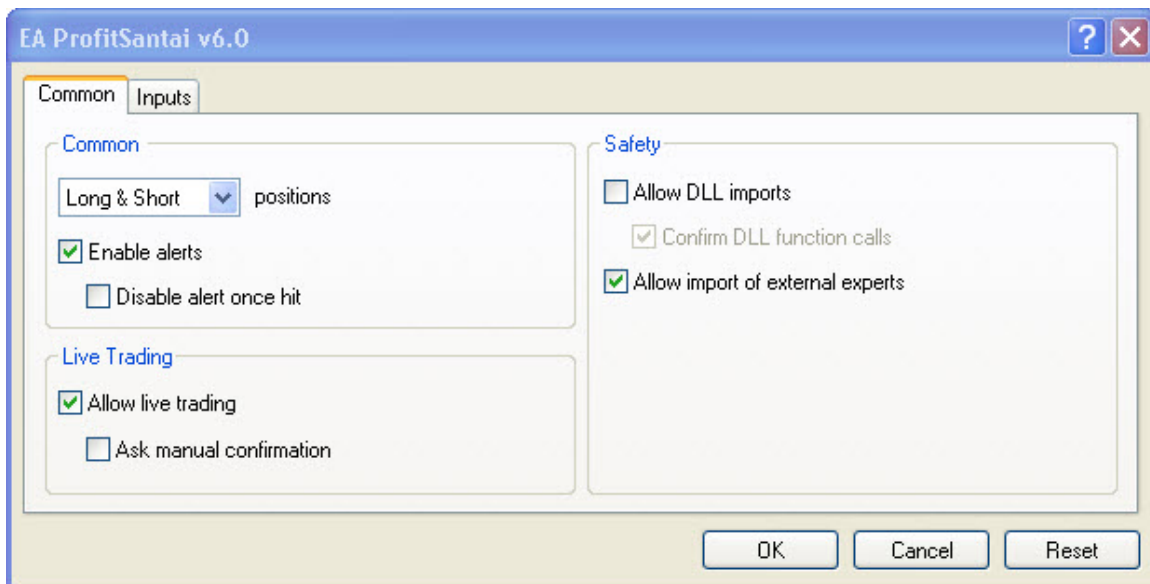
4. Launch MetaTrader
- Click Start → All Programs → MetaTrader FXOpen → MetaTrader FXOpen

Note: If your Metatrader platform is already open, please close and re-open.

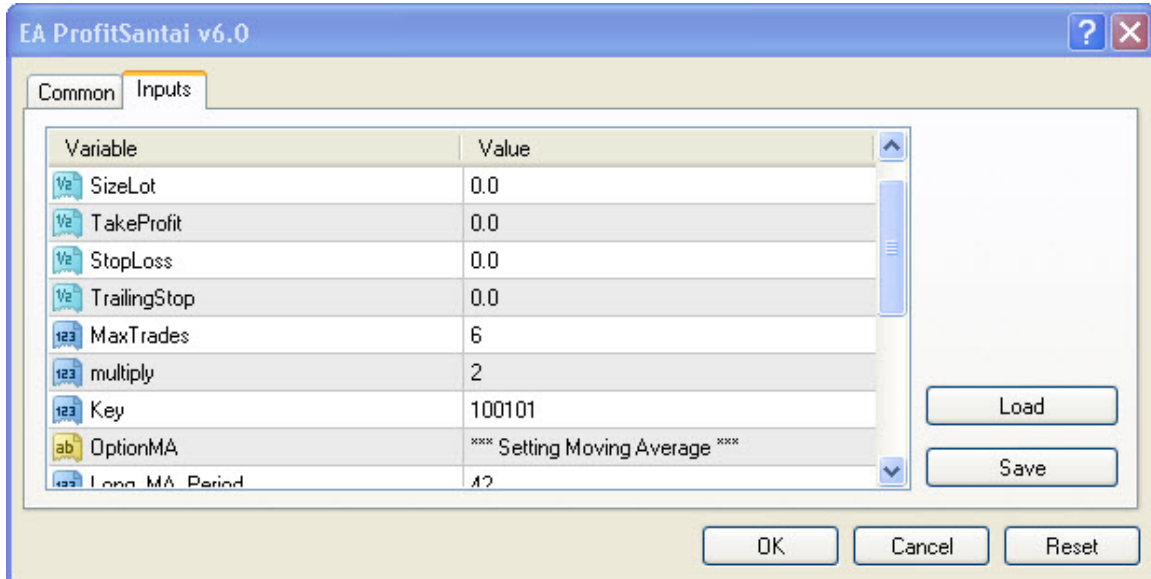
5. How to use:-

a. EAProfitSantai-6.0 :

- i. Open a new chart  : EUR/USD, timeframe 1H or 30M or 15M.
- ii. Click navigator on your toolbar or go to view→Navigator or press ctrl + N on your keyboard.
- iii. On your left, you will see the navigator, find Expert Advisors, click + and you can see EAProfitSantai-6.0.

- iv. Drag EAProfitSantai-6.0 into the chart.
- v. You will see a pop up box with 2 tabs. “Common and Inputs”. Make sure you tick “Allow Live Trading” under the Common tab. You need to change settings, it under the Inputs tab.



- vi. You will see a small smiling face at the top right corner of the chart. EA ProfitSantai v6.0 ☺



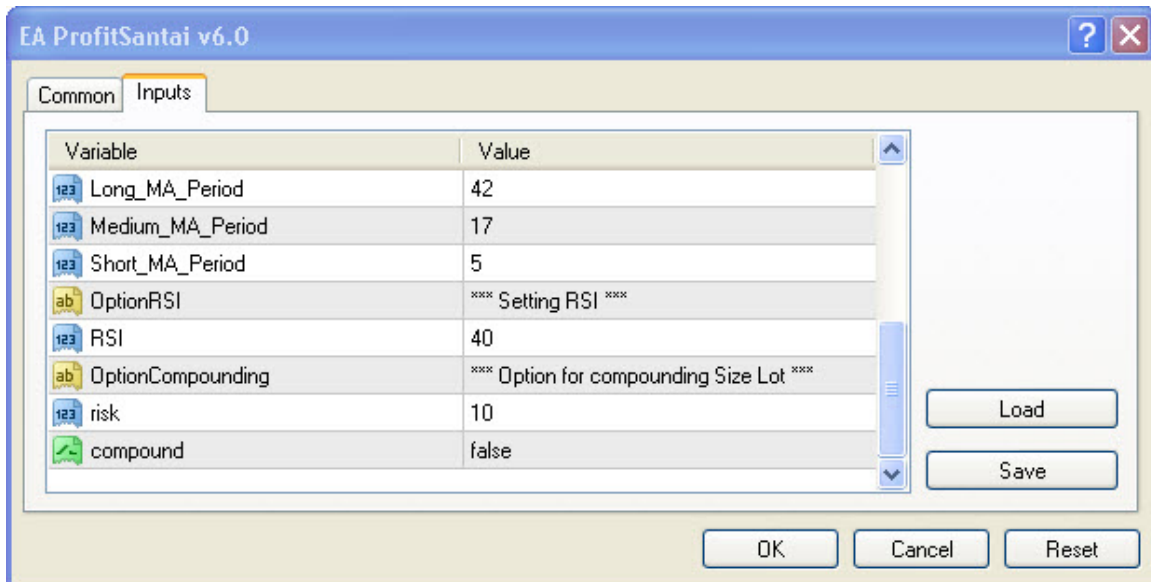
EA ProfitSantai v6.0

Common Inputs

Variable	Value
SizeLot	0.0
TakeProfit	0.0
StopLoss	0.0
TrailingStop	0.0
MaxTrades	6
multiply	2
Key	100101
OptionMA	*** Setting Moving Average ***
Long_MA_Period	42

Load Save

OK Cancel Reset



EA ProfitSantai v6.0

Common Inputs

Variable	Value
Long_MA_Period	42
Medium_MA_Period	17
Short_MA_Period	5
OptionRSI	*** Setting RSI ***
RSI	40
OptionCompounding	*** Option for compounding Size Lot ***
risk	10
compound	false

Load Save

OK Cancel Reset

The Inputs are as follows:

1. SizeLot = 0.0 (2 decimal). If SizeLot = 0.0, EAProfitSantai-6.0 use minimum size lot that you broker allow. Some broker use 0.1 and other 0.01. If you need to use your own size lot, you can change here.
2. TakeProfit = 0.0. If TakeProfit = 0.0, EAProfitSantai-6.0 will calculate suitable take profit and set take profit automatically. Take profit base on daily pivot point calculation. If you need to use your own take profit, you can set here.
3. StopLoss = 0.0. If StopLoss = 0.0, EAProfitSantai-6.0 will calculate suitable stop loss and set stop loss automatically. Stop loss base on daily pivot point calculation. If you need to use your own stop loss, you can change here.
4. MaxTrades = 6. Maximum number of positions EAProfitSantai-6.0 will open.
Example: MaxTrades = 6: EA will open 0.1, 0.2, 0.4, 0.8, 1.6 and 3.2 lots.
MaxTrades = 4: EA will open 0.1, 0.2, 0.4 and 0.8 lots.
5. Multiply = 2, EA will open with size lot 0.1, 0.2, 0.4, 0.8, 1.6, 3.2
Multiply = 3, EA will open with size lot 0.1, 0.3, 0.9, 2.7, 8.1, 24.3
Multiply = 1, EA will open with size lot 0.1, 0.1, 0.1, 0.1, 0.1, 0.1
6. Key = MagicNumber. Please enter different key when you want to use another currency. The key must be unique.
7. Indicator.
 - a. Long_MA_Period = Moving average period
 - b. Medium_MA_Period = Moving Average period
 - c. Short_MA_Period = Moving Average period
 - d. RSI = RSI period
8. Risk. How much margin do you prefer to use. Example, 10(%) of risk that mean 10(%) from your available margin. This risk only working if you set compound = true, if compound = false, initial lot = SizeLot.
9. Compound = True, EAProfitSantai-6.0 will calculate your margin and your risk and open positions base on that calculation.

Fully Automated Forex Trading System

10. Stop loss and take profit will automatic setup. System will calculate stop loss and take profit.

```
GBPUSD,M30 1.49070 1.49100 1.49010 1.49010
EAProfitSantai-6.0
www.santaiforex.afcobiz.com
Forex Account Server :
Date : 1-7-2009
Server Time: 0:7:5
Serial Number :
Email Address :
Account Name :

BreakOut System
Pivot Point : 1.48
Support : 1.4609
Resistance : 1.5098
Open BUY when price break : 1.4949
Open SELL when price break : 1.4705

Moving Average 42 & 17 : UP Trend
Moving Average 17 & 5 : UP Trend
RSI 40 : UP Trend

Waiting for next Signal
```

Please take note : make sure after you drag EAProfitSantai-6.0 into chart, info on left side appear. If not, EAProfitSantai-6.0 not running properly.

Setting base on your style of trading. (Right click → Template → EAProfitSantai-6.0)

1. Low risk.
 - a. Minimum deposit below 1K USD for standard account(1pips = 1usd) and 100USD for mini account(1pips=0.1cent) and 10USD for micro account(1pips=0.01cent).
 - b. SizeLot = 0.1.
 - c. MaxTrades = 1.
 - d. Compound = False.
2. Medium risk.
 - a. Minimum deposit 5K USD(and above) for standard account(1pips = 1usd) and 500USD for mini account(1pips=0.1cent) and 50USD for micro account(1pips=0.01cent).
 - b. SizeLot = 0.1
 - c. MaxTrades = 3.
 - d. Compound = False.
3. High risk(default setting for EAProfitSantai-6.0)
 - a. Minimum deposit 10K USD(and above) for standard account(1pips = 1usd) and 1000USD for mini account(1pips=0.1cent) and 100USD for micro account(1pips=0.01cent).
 - b. SizeLot = 0.1
 - c. MaxTrades = 6.
 - d. Compound = False.
4. Extreme risk.
 - a. Minimum deposit 50K USD(and above) for standard account(1pips = 1usd) and 5000USD for mini account(1pips=0.1cent) and 500USD for micro account(1pips=0.01cent).
 - b. SizeLot = 0.1
 - c. MaxTrades = 10.
 - d. Risk = 10(%)

Thank you for purchasing the EAProfitSantai-6.0 original version. If you have obtained this EA from someone who is not an authorized seller, please inform us at: bzonline2112@gmail.com

THE RISK OF LOSS IN TRADING FOREIGN EXCHANGE (FOREX) CAN BE SUBSTANTIAL. YOU SHOULD THEREFORE CAREFULLY CONSIDER WHETHER SUCH TRADING IS SUITABLE FOR YOU IN LIGHT OF YOUR FINANCIAL CONDITION. THE HIGH DEGREE OF LEVERAGE THAT IS OFTEN OBTAINABLE IN FOREX TRADING CAN WORK AGAINST YOU AS WELL AS FOR YOU. THE USE OF LEVERAGE CAN LEAD TO LARGE LOSSES AS WELL AS GAINS. Forex trading offers large potential rewards, but also large potential risk. You must be aware of the risks and be willing to accept them in order to invest in the Forex market. Don't trade with money you can't afford to lose. No single system is perfect. Any live trading that you do, be it manual or automated, you are doing so at your own risk and discretion. Forex is a very risky and unpredictable business. You can lose large sums of money by taking the risk of trading in the live market. We shall not be held responsible for any losses that you might incur during any trades. This is neither a solicitation nor an offer to Buy/Sell currencies, futures, stocks or options on the same. The past performance of any trading system or methodology is not necessarily indicative of future results. No guarantee is made that you will be able to replicate the same results.